

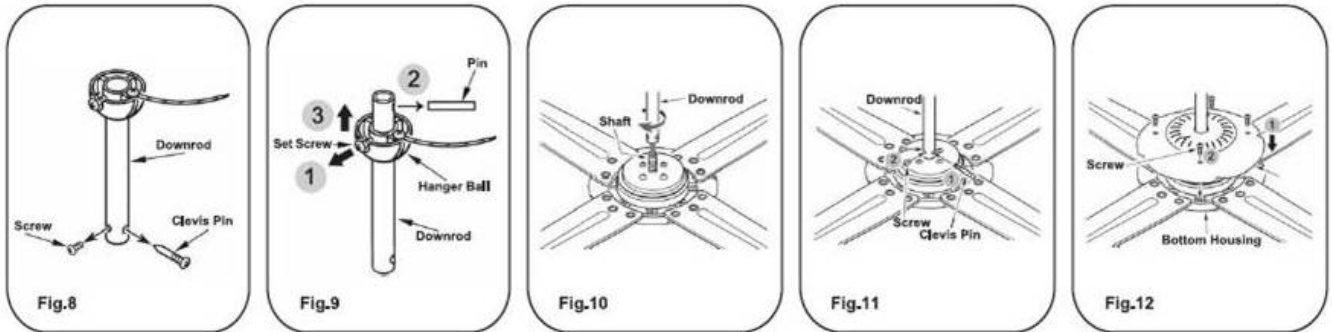
TECHNICAL BULLETIN

Date: June 30 2014

Re: F738 Pancake Installation

Due to the unique design of the pancake, there are several differences between the installation of a traditional ceiling fan and the F738.

1. Installation of the down rod is meant to be completed ahead of the re-installation of the top housing. This is mentioned in the catalog however some electricians/installers may miss this small but crucial step.



2. The receiver is a Mushroom shape and has wire connector plugs on the side that connects to the fan. There is no need to cut the wires as this side will connect directly to the fan wires which include the corresponding connectors.



3. This fan comes with 12" of lead wire including connectors and is sufficient to install with the 6" internally threaded down rod. Should a longer down rod be needed, the DR15 Series is shipped with necessary wire length to complete the installation.

